

2018

AMERICAN ADVERTISING AWARDS

PITTSBURGH, PA

AMERICAN ADVERTISING FEDERATION



WE'RE CYC'D

TO SHARE OUR WHITE CYC

- | 3,500 square feet sound proof studio
- | white cyc | green screen
- | green room | parking
- | private entrance
- | open 24 hours



P I T T S B U R G H

For rates contact Studio 11 today! | studio11@wpxi.com | 412.237.1211

Studio 11 would like to congratulate the Pittsburgh Ad Community!

From the well-appointed executive offices of the Addy Chair

Thank you for being here tonight, and for your participation in the 2018 Pittsburgh ADDY Awards.

You know, for years I used to run the show from a computer way in the back and I had a lot of pressure on me to keep it running smoothly and on time. But thanks to the wonderful Brian Duncan who runs the show now, I'm now able to sit anywhere I like and more importantly drink as much as I like.

From the Pitch and the Hall of Fame Gala, to The Chiefs, to the upcoming Media Auction, it's another great year in Pittsburgh advertising events and celebrations.

Tonight's show featured a lot of great work and everyone who entered the show...*finalists or not*...should be proud. The judges, as they always are, were amazed by how much good work there was to see. And they had a tough time cutting it down to the number of finalists that our national organization expects.

We've heard from other clubs around the country that this was a truly brutal year for entries with some clubs down over 60%. New York City, Kansas City and clubs in Arizona saw significantly lower entries. Our entries dipped just a little, but the quality didn't drop at all.

I also wanted to mention another way it was a hard year. We lost several people in our community much too soon. And it reminds us how important it is to cherish our time together professionally and personally.

Finally I just wanted to thank everyone on the Addy Committee and our volunteers for the great work they've done. This show couldn't happen without them. And a huge thank you to our sponsors WPXI Studio 11 and Chemistry. We really appreciate the support and couldn't have done the show without you.

I hope everyone enjoyed the show and see you next year.

Matt Hildebrand

ADDY Chair and bon vivant

2018 AMERICAN ADVERTISING AWARDS

PITTSBURGH, PA

SALES & MARKETING	1
PRINT ADVERTISING	5
OUT OF HOME & AMBIENT MEDIA	8
ONLINE/INTERACTIVE	17
FILM, VIDEO AND SOUND	19
CROSS PLATFORM	22
ELEMENTS OF ADVERTISING	25
MOSAIC AWARD	29
JUDGES CHOICE AWARD	30
BEST OF SHOW	31
MEMBERSHIP DIRECTORY	42



DENOTES A GOLD ADDY WINNER

SILVER SPONSOR



DESSERT SPONSOR



W P X I - T V

SPECIAL THANKS

This annual competition and show could not happen without the support of a wonderful team of volunteers, friends and sponsors.

ADDY CHAIR

Matt Hildebrand

ADDY JUDGING CHAIR

Gordon Robertson

ADDY COMMITTEE

Brian Ackermann

MacKenzie Cherban

Amy Del Rio-Gazzo

Evie DeSarno

Brian Duncan

Erin Hess

Matt Hildebrand

Kristen Psica

Mike Giunta

ADDY SHOW DIRECTOR

Brian Duncan

ADDY BOOK DESIGN BY

Matt Hildebrand

ADDY BOOK PRINTED BY

RR Donnelley

ADDY SHOW SITE PRODUCTION BY

Massive Media

AWARD SHOW AUDIO PRODUCED BY

Big Science

AWARD SHOW TROPHIES BY

Elegance In Awards

VOICE OVER TALENT

Lisa Airesman

IN-KIND SPONSORS

Cwenar Photography

RR Donnelley

Massive Media

SPECIAL THANKS

Big Science

Chemistry

Cwenar Studios

Garrison Hughes

MARC USA

August Wilson Center for
African American Culture

Pittsburgh Cultural Trust

The Fairmont Pittsburgh



LANDON BEAMER

Martin Williams Advertising
Art Director

Landon Beamer is a creative director based in Minneapolis. He attended Boston University and is originally from Seattle. He has worked on brands including T-Mobile, American Girl, Visit Seattle, Kubota, Syngenta amongst many others. He has spent time at Publicis, Martin Williams and several other agencies. In his free time, Landon is an avid alpinist and has hiked through more than a dozen national parks.



KEVIN DUNLEAVY

McGarrah Jessee
Creative Director/Writer

Kevin Dunleavy made it out alive from the VCU Adcenter (now Brandcenter) in 2006. Since then, he spent a long while at the Martin Agency in Richmond, a short while at mono in Minneapolis, a medium while at McGarrah Jessee in Austin, a brief-but-beautiful while down the street at GSD&M, and is now back for a while at McGarrah Jessee. In all that time, he's been lucky to work with good people on accounts like GEICO, UPS, Shiner Beers, Whataburger, Petsmart, RadioShack and more — and win an award or three in the process. Kevin believes it's important to work hard and have a laugh, to be honest in everything, and that somewhere in America, at any given point in time, a Peter Frampton song is playing on the radio.



JAMES FLETCHER

Leo Burnett Arc Worldwide
Creative Director

James grew up in the hometown of Anheuser-Busch, where he developed a taste for great beer ads and so-so beer. After a Journalism Degree from Missouri University, followed by a brief stint in radio sales, he made the jump to Creative Circus in Atlanta. Agency gigs in Baltimore, NYC, and Philadelphia ensued, before landing in Chicago, where he currently works at Leo Burnett Arc on a variety of global and national accounts, including creating a few great beer ads of his own for MillerCoors.



MATT PERRY

Leo Burnett | Engage M1
Associate Creative Director

Matt Perry is an experienced advertising creative with 14 years in the business, two Super Bowl spots and time at some of the most illustrious agencies in the business. Including Leo Burnett, BBDO and Goodby, Silverstein & Partners. Working across all mediums, he currently serves as Co-Creative Lead on GMC Social at Engage M1 Leo Burnett in Detroit



PETE POHL

Rhea + Kaiser
Associate Creative Director

For more than 30 years, Pete has created advertising based on the notion that most people have brains. He believes work that respects intelligence wins hearts, minds and business. He's been at agencies in Minneapolis (Bozell, BBDO), Michigan (Lawler Ballard, Bozell) and Chicago (Hal Riney, FCB, DDB, Rhea + Kaiser). Clients have included Kraft, Quaker, Anheuser Busch, Bayer CropScience, State Farm, Citi and Sears. Several of his ads and campaigns have been honored by the One Show, Communication Arts and Clio, and his Jeep spot, "Snow Covered" won the Grand Prix at Cannes and was named one of the best 100 best TV commercials of all time Pete is currently the Associate Creative Director at Rhea + Kaiser. He keeps his blood pressure in check by sailing CopyCat, a 32-foot Catalina, on Lake Michigan.

SALES & MARKETING

Doug Dean
Less Than Jake Sound The Alarm
Pure Noise Records
Doug Dean, Art Direction and Design



Smith Brothers Agency
Rising Sun Can Design
Iron Hill Brewery
Bronson & Lindsey Smith, Chief Creative Officers
Craig Seder, Executive Creative Director
Jon Nicholson, Art Director
Kelsey Miller, Copywriter
Cliff Rankin, Account Director
Ashley Sieniawski, Project Manager



Smith Brothers Agency
Citra Can Design
Iron Hill Brewery
Bronson & Lindsey Smith, Chief Creative Officers
Craig Seder, Executive Creative Director
Jon Nicholson, Art Director
Kelsey Miller, Copywriter
Cliff Rankin, Account Director
Ashley Sieniawski, Project Manager



Garrison Hughes
My Girl
Iron Hill Brewery
Bill Garrison, Copywriter
Dave Hughes, Art Director
Keri Tiani, Art Director
Dave Bernhardt, Retoucher





Smith Brothers Agency
Signature Series Cans
Iron Hill Brewery
Bronson & Lindsey Smith, Chief Creative Officers
Craig Seder, Executive Creative Director
Shawn Smith, Associate Creative Director
Kelsey Miller, Copywriter
Cliff Rankin, Account Director
Ashley Sieniawski, Project Manager



Smith Brothers Agency
Seasonal Cans Design
Iron Hill Brewery
Bronson & Lindsey Smith, Chief Creative Officers
Craig Seder, Executive Creative Director
Jon Nicholson, Art Director
Kelsey Miller, Copywriter
Cliff Rankin, Account Director
Ashley Sieniawski, Project Manager



BRUNNER
More Than A Home/Comfy Chair
WesBanco
Rob Schapiro, Chief Creative Officer
Derek Julin, Associate Creative Director
Lauren Tedesco, Account Planner
Dana Lucas, Senior Account Manager
Emily DeShantz, Producer
Jim Lundy, Senior Production/Operations Manager
Lenny Wilson, Illustrator/Animal
Nathan Inglesby, Illustrator/Animal



SALES & MARKETING

BRUNNER

More Than A Home/Beach Ball

WesBanco

Rob Schapiro, Chief Creative Officer

Derek Julin, Associate Creative Director

Kevin Corfield, Associate Creative Director

Lauren Tedesco, Account Planner

Dana Lucas, Senior Account Manager

Emily DeShantz, Producer

Jim Lundy, Senior Production/Operations Manager

Lenny Wilson, Illustrator/Animal

Nathan Inglesby, Illustrator/Animal



BRUNNER

More Than A Home/Grad Cap

WesBanco

Rob Schapiro, Chief Creative Officer

Derek Julin, Associate Creative Director

Lauren Tedesco, Account Planner

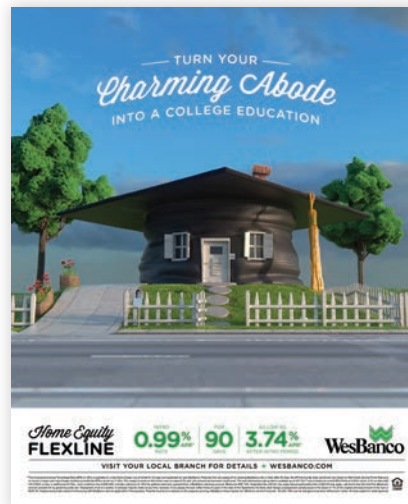
Dana Lucas, Senior Account Manager

Emily DeShantz, Producer

Jim Lundy, Senior Production/Operations Manager

Lenny Wilson, Illustrator/Animal

Nathan Inglesby, Illustrator/Animal



Animal, Inc

Shoebox Funeral

Animal Media Group

Beth Voltz, Author

Beth Voltz, Creative Director

Animal Media Group, Publishing

Idil Gozde, Illustrator/Designer

Howard Shapiro, THE MAN



SALES & MARKETING



MARC USA
Pittsburgh Opera/The Summer King
Pittsburgh Opera
Dena Mosti, Creative Director
Adam Cicco, Associate Creative Director
Bryan Hadlock, Chief Creative Officer
Greg Edwards, Group Creative Director
Beth Hurley, Print Production Supervisor
Tom Yorgen, Sr. Print Production Supervisor

Wall-to-Wall Studios
Halloween Bash
Pittsburgh Shorts Film Festival, Film Pittsburgh
Larkin Werner, Creative Director
Doug Dean, Associate Creative Director

Wall-to-Wall Studios
Sprague Pest Control Holiday Cards
Sprague Pest Control
Larkin Werner, Creative Director
Nate Fussner, Senior Designer

MARC USA
Retire 21 T-Shirts
The Clemente Museum
Tyler Bergholz, Creative Director/Designer
Craig Ferrence, Creative Director/Designer
Josh Wiegod, Account Lead
Josh Blasingame, Creative Director
Greg Edwards, Creative Director
Bryan Hadlock, CCO



Occasional Cards

Wall-to-Wall Studios

Larkin Werner, Creative Director

Doug Dean, Associate Creative Director

Larkin Werner, Creative Director

Nate Fussner, Senior Designer

Chris Edington, Designer

Kate Staaf, Designer

Éclair / Never Any / Take A Look

Éclair Naturals

Bryan Hadlock, Chief Creative Officer

Dena Mosti, Creative Director

Tanya Wasyluk, Copywriter

Heather Kratsas, Management Supervisor

Ruven Afanador, Photographer

Joanne Gair, Body Painting Artist

John Blumen, Retoucher

Michał Kiciór, Retoucher

Éclair / Never Any / Not Made Of

Éclair Naturals

Bryan Hadlock, Chief Creative Officer

Dena Mosti, Creative Director

Tanya Wasyluk, Copywriter

Heather Kratsas, Management Supervisor

Ruven Afanador, Photographer

Joanne Gair, Body Painting Artist

John Blumen, Retoucher

Michał Kiciór, Retoucher

Éclair / Never Any / Flaunt It

Éclair Naturals

Bryan Hadlock, Chief Creative Officer

Dena Mosti, Creative Director

Tanya Wasyluk, Copywriter

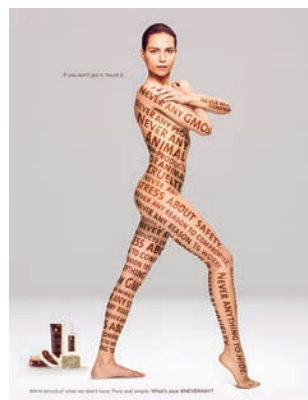
Heather Kratsas, Management Supervisor

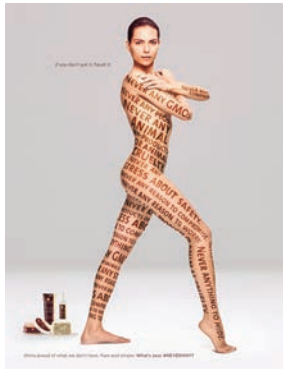
Ruven Afanador, Photographer

Joanne Gair, Body Painting Artist

John Blumen, Retoucher

Michal Kicior, Retoucher





MARC USA
Éclair / Never Any
Éclair Naturals
Bryan Hadlock, Chief Creative Officer
Dena Mosti, Creative Director
Tanya Wasyluk, Copywriter
Heather Kratsas, Management Supervisor
Ruven Afanador, Photographer
Joanne Gair, Body Painting Artist
John Blumen, Retoucher
Michal Kicior, Retoucher



Garrison Hughes
Tagged
Heinz History Center
Bill Garrison, Copywriter
Dave Hughes, Art Director
Mike Giunta, Copywriter
Tia Kalas, Art Director
Dave Bernhardt, Retoucher



Garrison Hughes
Likes
Heinz History Center
Bill Garrison, Copywriter
Dave Hughes, Art Director
Mike Giunta, Copywriter
Tia Kalas, Art Director
Dave Bernhardt, Retoucher

PRINT ADVERTISING

Garrison Hughes
Social
Heinz History Center
Bill Garrison, Copywriter
Dave Hughes, Art Director
Mike Giunta, Copywriter
Tia Kalas, Art Director
Dave Bernhardt, Retoucher

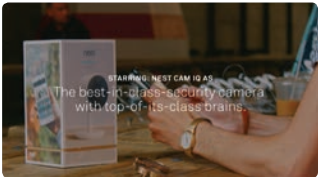
MARC USA
The Warhol - Moshiri - Iranian
The Warhol Museum
Adam Cicco, Associate Creative Director
Josh Blasingame, Creative Director
Beth Hurley, Print Production Supervisor
Christy Rodibaugh, Associate Buying Director
Kathy Isherwood, Account Supervisor
Greg Edwards, Group Creative Director

Garrison Hughes
Pixburgh
Heinz History Center
Bill Garrison, Copywriter
Dave Hughes, Art Director
Mike Giunta, Copywriter
Tia Kalas, Art Director
Dave Bernhardt, Retoucher

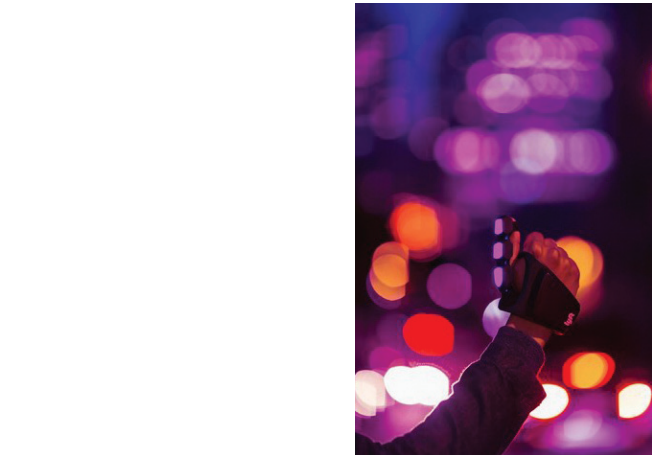




AlphaGraphics
Safety First Posters
Nesco Resource
Jason Doring, Art Director
Tracy Schneider, Marketing & Design Manager
Ryan Prescott, Project Manager



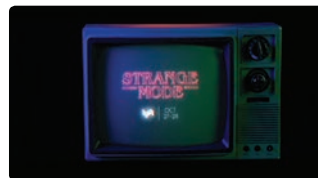
Deeplocal
The Heist
Nest Labs



Deeplocal
Lyft Mono
Lyft



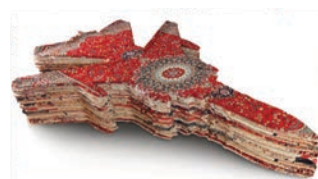
Deeplocal Strange Mode Netflix



Tyler Bergholz, Creative Director/Designer
Craig Ferrence, Associate Creative Director/Designer
Josh Wigod, Account Supervisor
Greg Edwards, Group Creative Director
Josh Blasingame, Creative Director
Beth Hurley, Production
Darin DiNapoli, Video / Shooter
Bryan Hadlock, CCO
Lisa Tristano Martin, Associate Director, PR/Social
Cheryl Sills, SVP - Director, Corp Communications

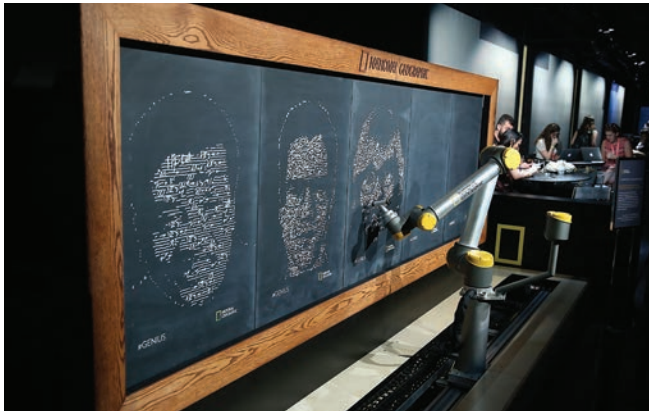


Adam Cicco, Associate Creative Director
Josh Blasingame, Creative Director
Marcello Figallo, Sr. Director, Digital Experience
Patti Mulligan, Director, Digital Experience Services
Mike Legacy, Interactive Developer
Jeff Kerekes, Digital Designer
David Anderson, Digital Designer
Animal Studios, Editorial
Christy Rodibaugh, Associate Buying Director
Darin DiNapoli, Sr. Multimedia Specialist
Kathy Isherwood, Account Supervisor
Greg Edwards, Group Creative Director



OUT-OF-HOME & AMBIENT MEDIA

Deeplocal
NatGeo: Einstein's Chalkboard
National Geographic



Piptone Group
Paris Air Show Trade Show Presence
Allegheny Technologies
Jeff Piatt, Chief Creative Officer
Ron Moehler, Principal
Gino Tavoletti, Senior Art Director/Designer
Randy Livingston, Senior Creative Director
Alex Oltmanns, Content Specialist



Deeplocal
Light Up Your Soul
SoulCycle

OUT-OF-HOME & AMBIENT MEDIA

Garrison Hughes
Remington
Scope International Contemporary Art Show
Bill Garrison, Copywriter
Dave Hughes, Art Director
Corey Tiani, Art Director
Dave Bernhardt, Retoucher



Garrison Hughes
Corona
Scope International Contemporary Art Show
Bill Garrison, Copywriter
Dave Hughes, Art Director
Corey Tiani, Art Director
Dave Bernhardt, Retoucher



Smith Brothers Agency
Citra Can Poster
Iron Hill Brewery
Bronson & Lindsey Smith, Chief Creative Officers
Craig Seder, Executive Creative Director
Jon Nicholson, Art Director
Kelsey Miller, Copywriter
Cliff Rankin, Account Director
Ashley Sieniawski, Project Manager



OUT-OF-HOME & AMBIENT MEDIA

MARC USA

Retire 21 Poster Series

The Clemente Museum

Tyler Bergholz, Creative Director/Designer

Craig Ferrence, Associate Creative Director/Designer

Josh Wigod, Account Supervisor

Beth Hurley, Production

Greg Edwards, Group Creative Director

Josh Blasingame, Creative Director

Bryan Hadlock, CCO



Garrison Hughes

Corona Remington

Scope International Contemporary Art Show

Bill Garrison, Copywriter

Dave Hughes, Art Director

Corey Tiani, Art Director

Dave Bernhardt, Retoucher



OUT-OF-HOME & AMBIENT MEDIA

MARC USA

Warhol-Firelei-Bigotry

Conair

Bryan Hadlock, CCO

Greg Edwards, Group Creative Director

Josh Blasingame, CD - Art Director

Adam Cicco, ACD - Copywriter

Duane Rieder, Photographer

Beth Hurley, Print Production Supervisor

Rob Larson, Retoucher

MARC USA

Warhol-Firelei-Hatred

Conair

Bryan Hadlock, CCO

Greg Edwards, Group Creative Director

Josh Blasingame, CD - Art Director

Adam Cicco, ACD - Copywriter

Duane Rieder, Photographer

Beth Hurley, Print Production Supervisor

Rob Larson, Retoucher

MARC USA

Warhol-Firelei-Resist

Conair

Bryan Hadlock, CCO

Greg Edwards, Group Creative Director

Josh Blasingame, CD - Art Director

Adam Cicco, ACD - Copywriter

Duane Rieder, Photographer

Beth Hurley, Print Production Supervisor

Rob Larson, Retoucher

MARC USA

Warhol-Firelei-Sexism

Conair

Bryan Hadlock, CCO

Greg Edwards, Group Creative Director

Josh Blasingame, CD - Art Director

Adam Cicco, ACD - Copywriter

Duane Rieder, Photographer

Beth Hurley, Print Production Supervisor

Rob Larson, Retoucher





BRUNNER

More Than A Home/Beach Ball

WesBanco

Rob Schapiro, Chief Creative Officer

Derek Julin, Associate Creative Director

Kevin Corfield, Associate Creative Director

Lauren Tedesco, Account Planner

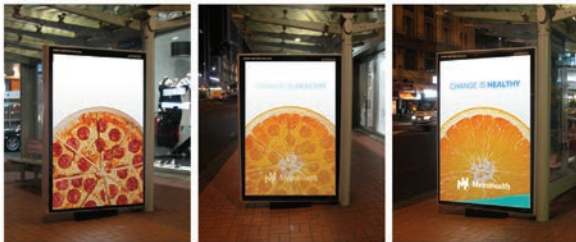
Dana Lucas, Senior Account Manager

Emily DeShantz, Producer

Jim Lundy, Senior Production/Operations Manager

Lenny Wilson, Illustrator/Animal

Nathan Inglesby, Illustrator/Animal



Chemistrty

MetroHealth Pizza

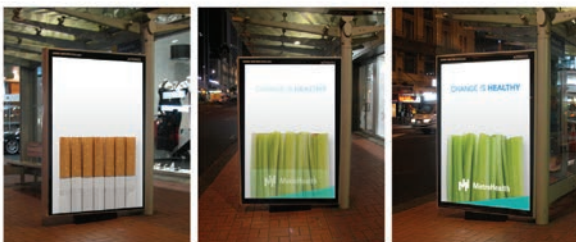
The MetroHealth System

Geoff Tolley, Chief Creative Officer / Writer

Ian Magill, ACD / Art Director

Rob Bupp, CD / Art Director

Paul Schrecongost, Writer/ACD



Chemistrty

MetroHealth Celery

The MetroHealth System

Geoff Tolley, Chief Creative Officer / Writer

Ian Magill, ACD / Art Director

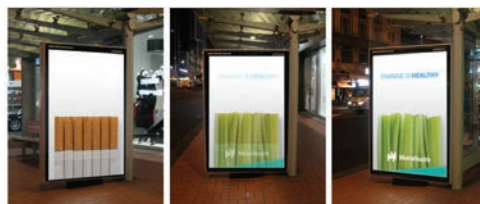
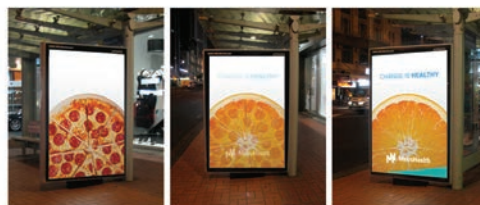
Rob Bupp, CD / Art Director

Paul Schrecongost, Writer/ACD



OUT-OF-HOME & AMBIENT MEDIA

Chemistrty
 MetroHealth Pizza/Celery
 The MetroHealth System
 Geoff Tolley, Chief Creative Officer / Writer
 Ian Magill, ACD / Art Director
 Rob Bupp, CD / Art Director
 Paul Schrecongost, Writer/ACD

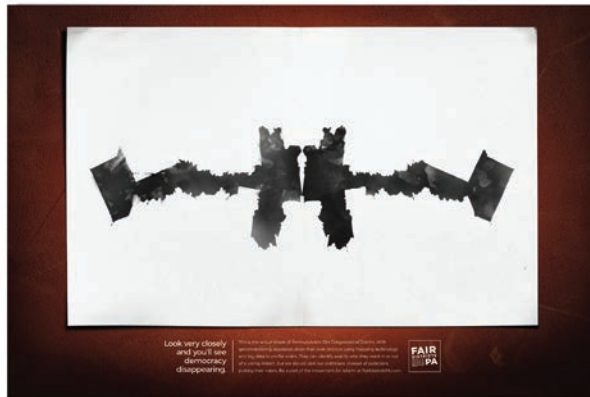


MARC USA
 Warhol-Firelei-Flowers
 Conair
 Bryan Hadlock, CCO
 Greg Edwards, Group Creative Director
 Josh Blasingame, CD - Art Director
 Adam Cicco, ACD - Copywriter
 Duane Rieder, Photographer
 Beth Hurley, Print Production Supervisor
 Rob Larson, Retoucher





Garrison Hughes
Voice
Fair Districts PA
Bill Garrison, Copywriter
Dave Hughes, Art Director
Mike Giunta, Copywriter
Debbie Regan, Art Director
Dave Bernhardt, Retoucher
Alexa Valenta, Designer



Garrison Hughes
Democracy
Fair Districts PA
Bill Garrison, Copywriter
Dave Hughes, Art Director
Mike Giunta, Copywriter
Debbie Regan, Art Director
Dave Bernhardt, Retoucher
Alexa Valenta, Designer



Garrison Hughes
What Do You See?
Fair Districts PA
Bill Garrison, Copywriter
Dave Hughes, Art Director
Mike Giunta, Copywriter
Debbie Regan, Art Director
Dave Bernhardt, Retoucher
Alexa Valenta, Designer



Garrison Hughes
Gerrymandering
Fair Districts PA
Bill Garrison, Copywriter
Dave Hughes, Art Director
Mike Giunta, Copywriter
Debbie Regan, Art Director
Dave Bernhardt, Retoucher
Alexa Valenta, Designer



ONLINE/INTERACTIVE

MARC USA

Retire21 - No Other Name

The Clemente Museum

Bryan Hadlock, CCO

Craig Ferrence, Associate Creative Director/Designer

Tyler Bergholz, Creative Director/Designer

Greg Edwards, Group Creative Director

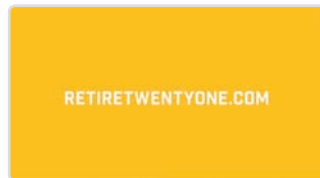
Josh Blasingame, Creative Director

Darin DiNapoli, Video / Shooter

Josh Wigod, Account Supervisor

Lisa Tristano Martin, Associate Director, PR/Social

Cheryl Sills, SVP - Director, Corp Communications



Wall-to-Wall Studios

Pittsburgh Marathon Announcement

Pittsburgh Three Rivers Marathon

Larkin Werner, Creative Director

Doug Dean, Associate Creative Director

Nate Fussner, Senior Designer



MARC USA

Retire 21 Social

The Clemente Museum

Tyler Bergholz, Creative Director/Designer

Craig Ferrence, Associate Creative Director/Designer

Josh Wigod, Account Supervisor

Greg Edwards, Group Creative Director

Josh Blasingame, Creative Director

Bryan Hadlock, CCO

Lisa Tristano Martin, Associate Director, PR/Social

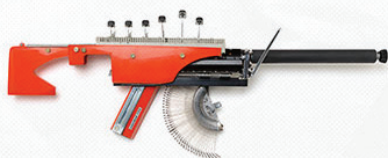
Cheryl Sills, SVP - Director, Corp Communications



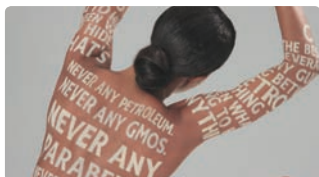


Garrison Hughes
Battle
Fort Ligonier
Bill Garrison, Copywriter
Dave Hughes, Art Director
Keri Tiani, Art Director
Vince Robleto, Copywriter
Norman Huelsman, Interactive Developer
Dave Bernhardt, Retoucher

We're putting
more guns
on the street.

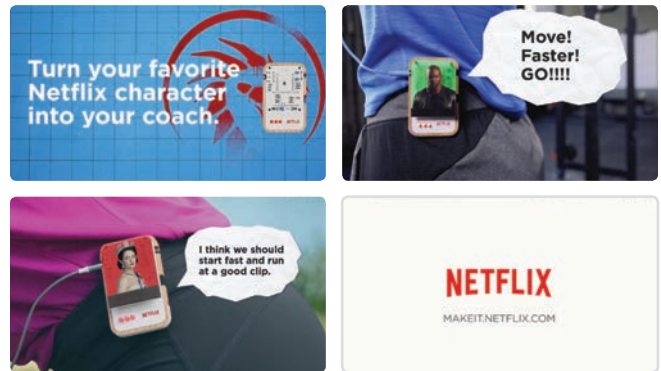


Garrison Hughes
Street
Scope International Contemporary Art Show
Bill Garrison, Copywriter
Dave Hughes, Art Director
Corey Tiani, Art Director
Norman Huelsman, Interactive Developer
Dave Bernhardt, Retoucher



MARC USA
Éclair / Never Any
Éclair Naturals
Bryan Hadlock, Chief Creative Officer
Dena Mosti, Creative Director
Tanya Wasyluk, Copywriter
Heather Kratsas, Management Supervisor
Ruven Afanador, Photographer
Joanne Gair, Body Painting Artist
Peter Fackler, Cinematographer
Outside the Frame, Video Editing & Post-Production

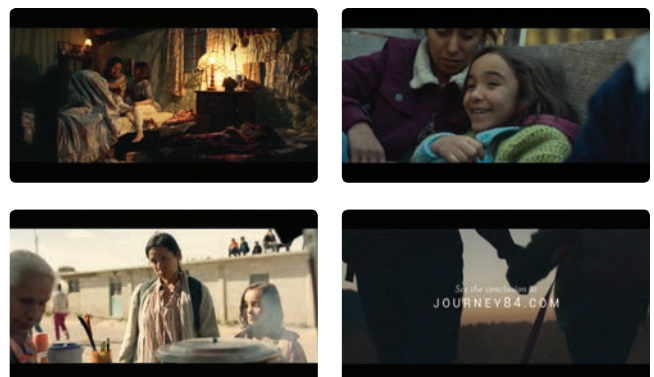
Deeplocal
Personal Trainer
Netflix

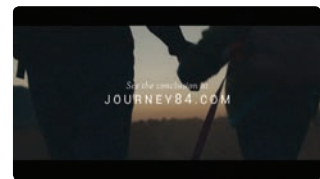
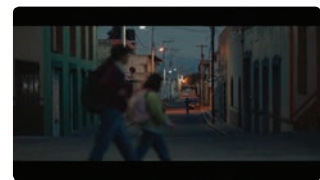
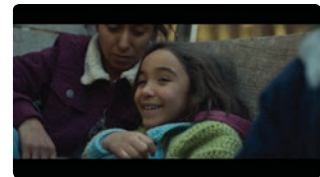
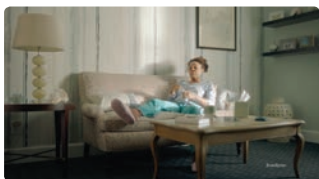


Wall-to-Wall Studios
Greetings Generator
Wall-to-Wall Studios
Larkin Werner, Creative Director
Doug Dean, Associate Creative Director
Kurt Novack, Developer
Mike Kozak, Director of Digital Strategy



BRUNNER
The Journey Begins
84 Lumber
Rob Schapiro, Chief Creative Officer
Dave Vissat, Creative Director
Derek Julin, Associate Creative Director
Kevin Corfield, Associate Creative Director
Jeff Maggs, Chief Client Officer
Lauren Tedesco, Account Director
John Noble, Producer/Fixer Partners
Brad Powell, Producer/Fixer Partners
Cole Webley, Director/Sanctuary
Justin Brown, Director of Photography
Preston Lee, Executive Producer/Sanctuary
Christopher Cho, Line Producer/Sanctuary





BRUNNER

More Than A Home

WesBanco

Rob Schapiro, Chief Creative Officer

Derek Julin, Associate Creative Director

Kevin Corfield, Associate Creative Director

Lauren Tedesco, Account Planner

Dana Lucas, Senior Account Manager

Emily DeShantz, Producer

Lenny Wilson, Director & Animation/Animal

Nathan Inglesby, Director & Animation/Animal

Nancy Heller, Producer/Animal

Nathan Voltz, Producer/Animal

Kathy Dziubek, Executive Producer/Animal

Storefront Music, Music

BRUNNER

Monday to Friday/Pinata

Mylan

Rob Schapiro, Chief Creative Officer

Jackie Murray, Creative Director

Maria Bowers, Associate Creative Director

Ashley Cagle, Copywriter

Lisa Airesman, Agency Producer

Kristen Cook, Account Management

Jess Buehner, Senior Account Manager

Stephanie Bane, Director of Account Planning

Brendan Gibbons, Director, Station Film

Matthew Woolf, Director of Photography

Michelle Towse, Executive Producer

Brienna Price, Producer

BRUNNER

The Journey

84 Lumber

Rob Schapiro, Chief Creative Officer

Dave Vissat, Creative Director

Derek Julin, Associate Creative Director

Kevin Corfield, Associate Creative Director

Jeff Maggs, Chief Client Officer

John Noble, Producer/Fixer Partners

Brad Powell, Producer/Fixer Partners

Cole Webley, Director/Sanctuary

Justin Brown, Director of Photography

Preston Lee, Executive Producer/Sanctuary

Christopher Cho, Line Producer/Sanctuary

Leopoldo Luisetti, Head of Production/La Casa Films



FILM, VIDEO & SOUND

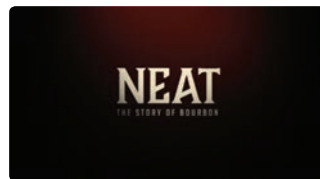
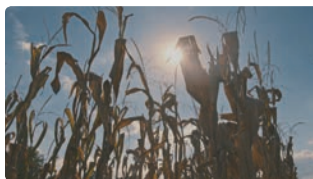
Andy Kelemen Productions
The Celebration of Jack Link's
Jack Link's

Andy Kelemen, Director
Rob Ruscher, Director of Photography
Danny Johnson, VFX
Ryan Stewart, Sound Design



Vinegar Hill
Neat: The Story of Bourbon
Neat Film, LLC

Vinegar Hill, Production Company
David Altrogge, Director
Michael J. Hartnett, Director of Photography
AJ Hochhalter, Producer
Jennifer Brown, Producer



Wall-to-Wall Studios

JFilm Festival Trailer

JFilm, Film Pittsburgh

Larkin Werner, Creative Director

Doug Dean, Associate Creative Director

Emily McGaughey, Designer/Illustrator

Ira Lederer, Motion Designer

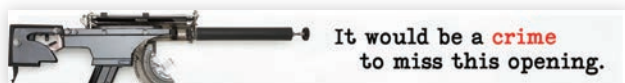
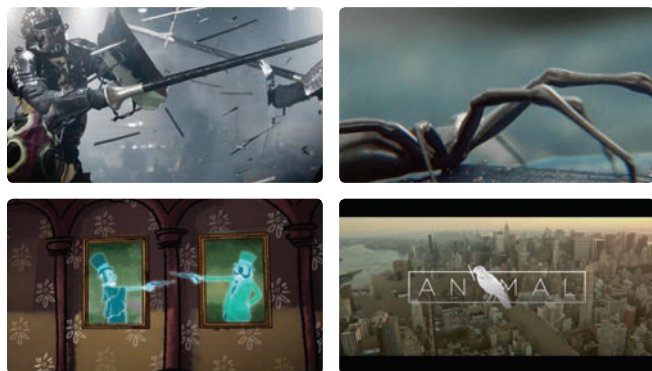


Animal, Inc.
 Animal Reel
 Animal, Inc.
 Animal, Inc., Production Company

Garrison Hughes
 Typewriter Guns
 Scope International Contemporary Art Show
 Bill Garrison, Copywriter
 Dave Hughes, Art Director
 Corey Tiani, Art Director
 Norman Huelsman, Interactive Developer
 Dave Bernhardt, Retoucher



BRUNNER
 More Than A Home
 WesBanco
 Rob Schapiro, Chief Creative Officer
 Derek Julin, Associate Creative Director
 Kevin Corfield, Associate Creative Director
 Dana Lucas, Senior Account Manager
 Emily DeShantz, Producer
 Jim Lundy, Senior Production/Operations Manager
 Lenny Wilson, Director & Animation/Animal
 Nathan Inglesby, Director & Animation/Animal
 Nancy Heller, Producer/Animal
 Nathan Voltz, Producer/Animal
 Kathy Dziubek, Executive Producer/Animal
 Storefront Music, Music



CROSS PLATFORM

BRUNNER

The Journey Campaign 84 Lumber

Rob Schapiro, Chief Creative Officer

Dave Vissat, Creative Director

Derek Julin, Associate Creative Director

Kevin Corfield, Associate Creative Director

Jeff Maggs, Chief Client Officer

Lauren Tedesco, Account Director

George Potts, VP, Director of Social Media

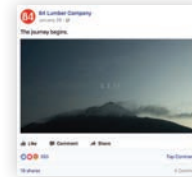
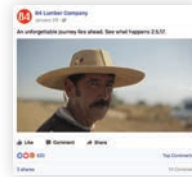
Alaina Sapienza, Senior Social Media Writer

Dan Magdich, Associate Creative Director

Trish Duffy, UX Designer

Amy DePalma, Visual Designer

Kristen Taggart, Director of Social Media



Wall-to-Wall Studios

Port of Pittsburgh

Port of Pittsburgh Commission

Larkin Werner, Creative Director

Doug Dean, Associate Creative Director

Chris Edington, Designer

Kate Staaf, Production Artist



PORTPITT

Port of Pittsburgh
Commission



IMPORTANT
PORTABLE
OPPORTUNITY
SUPPORT
TRANSPORT



MARC USA

Retire 21 Integrated Campaign

The Clemente Museum

Tyler Bergholz, Creative Director/Designer

Craig Ferrence, Associate Creative Director/Designer

Josh Wigod, Account Supervisor

Beth Hurley, Production

Darin DiNapoli, Video/DP

Josh Blasingame, Creative Director

Greg Edwards, Creative Director/Copywriter

Bryan Hadlock, CCO



21

RE21RE





Blender, Inc.
 Save Maxo Vanka
 Society to Preserve the Millvale Murals of Maxo Vanka
 Kris Knieriem, CD/Writer
 Steve Lowry, CD/Art Director
 Chris Hays, VP/Director of Strategy



Wall-to-Wall Studios
 SCS Integrated Branding
 Carnegie Mellon University, School of Computer Science
 Larkin Werner, Creative Director
 Doug Dean, Associate Creative Director
 Kate Staaf, Production Artist
 Ann Trondle-Price, Writer



Wall-to-Wall Studios
 Pittsburgh Shorts Film Festival
 JFilm, Film Pittsburgh
 Larkin Werner, Creative Director
 Doug Dean, Associate Creative Director
 Emily McGaughey, Designer/Illustrator
 Ira Lederer, Motion Designer

Wall-to-Wall Studios
Pittsburgh Shorts Film Festival
JFilm, Film Pittsburgh
Larkin Werner, Creative Director
Doug Dean, Associate Creative Director
Emily McGaughey, Designer/Illustrator
Ira Lederer, Motion Designer

MARC USA
Retire 21 Logo/Identity System
The Clemente Museum
Tyler Bergholz, Senior Art Director / Designer
Craig Ferrence, Associate Creative Director / Designer
Josh Wiegod, Account Supervisor
Greg Edwards, Group Creative Director
Josh Blasingame, Creative Director
Bryan Hadlock, CCO

The collage consists of several overlapping posters. On the left, a red poster features the text 'fun size fits all.' and 'fun size fits all.' in white, with 'shorts' in a smaller font. In the center, a black poster with white silhouettes of various objects (a person, a head, a heart, an apple) is titled 'short on time?'. Below it, a red poster says 'short and sweet.' and 'shorts'. To the right, a poster shows a close-up of a film reel with the text 'opening shorts' and 'nightshorts'. Further right, a poster with a red background and white text says 'hello, shorts!' and 'best of festival'. On the far right, a poster with a black background and white text says 'BIG LIGHT' and 'Toronto International Film Festival'.



21

RE21RE



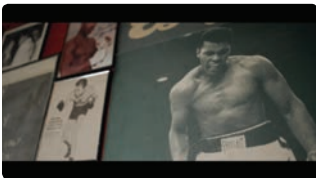
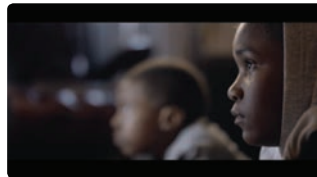
ELEMENTS OF ADVERTISING



Scott Goldsmith Photography
New First Family at Inauguration
Politico
Scott Goldsmith, Photographer



AlphaGraphics
Nesco Resource Safety First Posters
Nesco Resource
Jason Doring, Art Director
Tracy Schneider, Marketing & Design Manager
Ryan Prescott, Project Manager



Animal, Inc.
Voices
Animal Media Group
Kathy Dziubek, Executive Producer
Danny Yourd, Director
John Pope, Director of Photography
Mike LaHood, Editor
Olivia Vaughn, Producer
Allan Stallard, Colorist
Defacto Sound, Sound Engineer
Stephen Keech, Composer



ELEMENTS OF ADVERTISING

BRUNNER

The Journey

84 Lumber

Rob Schapiro, Chief Creative Officer

Dave Vissat, Creative Director

Derek Julin, Associate Creative Director

Kevin Corfield, Associate Creative Director

Jeff Maggs, Chief Client Officer

Lauren Tedesco, Account Director

John Noble, Producer/Fixer Partners

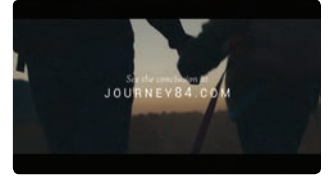
Brad Powell, Producer/Fixer Partners

Cole Webley, Director/Sanctuary

Justin Brown, Director of Photography

Christopher Cho, Line Producer/Sanctuary

Leopoldo Luisetti, Head of Production/La Casa Films



Animal, Inc.

More Than A Home

WesBanco

Kathy Dziubek, Executive Producer

Nancy Heller, Producer

Nathan Inglesby, Comp Lead

Lenny Wilson, CG Lead

Brunner, Agency

Kevin Corfield, Associate Creative Director/Writer

Derek Julin, Associate Creative Director/Art Director

Rob Schapiro, CCO

Emily DeShantz, Agency Producer

Contagious Sound, Audio Engineer

Storefront Music, Composer



BRUNNER

The Journey

84 Lumber

Rob Schapiro, Chief Creative Officer

Dave Vissat, Creative Director

Derek Julin, Associate Creative Director

Kevin Corfield, Associate Creative Director

Jeff Maggs, Chief Client Officer

Lauren Tedesco, Account Director

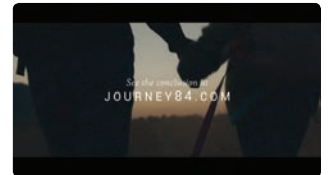
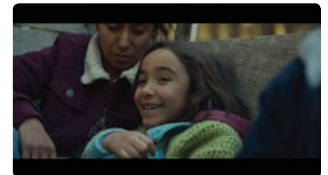
John Noble, Producer/Fixer Partners

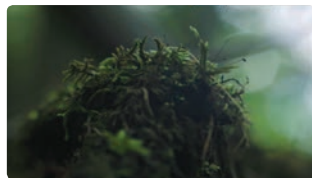
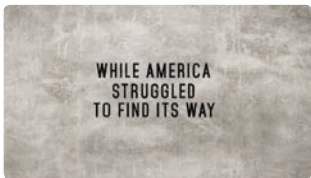
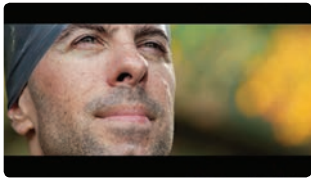
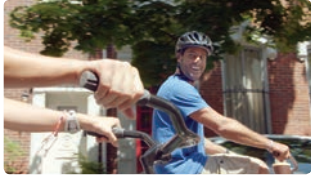
Brad Powell, Producer/Fixer Partners

Cole Webley, Director/Sanctuary

Justin Brown, Director of Photography

Preston Lee, Executive Producer/Sanctuary





BRUNNER
 125th Anniversary
 Huff Corporation
 Rob Schapiro, CCO
 Dave Vissat, Creative Director
 Maria Bowers, Associate Creative Director
 Ashley Cagle, Copywriter
 Bill Moore, Director/Editor
 Emily DeShantz, Producer/Business Affairs
 Jason Mileto, Editor
 Jake Bendel, Account Director
 Candace Keudel-Schaffer, Senior Account Manager
 Alex Kotz, Account Manager
 Eric Girgash, Director of Photography
 Ray Thomson, EVP, Global Marketing & Marketing

Big Science Music
 Cwenar Studios Healthcare Reel 2017
 Cwenar Studios
 Big Science Music
 Tom Cwenar, Cwenar Studios

Big Science Music
 Josh Gibson Summer-King Opera
 Pittsburgh Opera
 Big Science Music
 Dena Mosti, Creative Director, MARC USA
 Adam Cicco, Associate Creative Director, MARC USA



Covalent
 Awaken
 TEDx Pittsburgh
 Nicholas Buchheit, Director & Editor
 Jeffrey Hilty, Producer
 Kirk Pearson, Composer & Sound Designer



MARC USA
Pittsburgh Opera/The Summer King
Pittsburgh Opera
Dena Mosti, Creative Director
Adam Cicco, Associate Creative Director
Bryan Hadlock, Chief Creative Officer
Greg Edwards, Group Creative Director
Beth Hurley, Print Production Supervisor
Tom Yorgen, Sr. Print Production Supervisor





BRUNNER

The Journey Begins

84 Lumber

Rob Schapiro, Chief Creative Officer

Dave Vissat, Creative Director

Derek Julin, Associate Creative Director

Kevin Corfield, Associate Creative Director

Jeff Maggs, Chief Client Officer

Lauren Tedesco, Account Director

John Noble, Producer/Fixer Partners

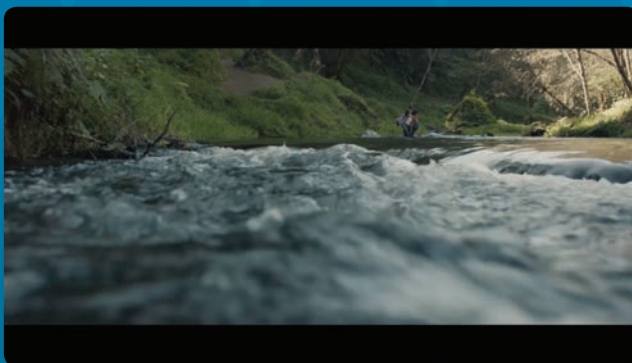
Brad Powell, Producer/Fixer Partners

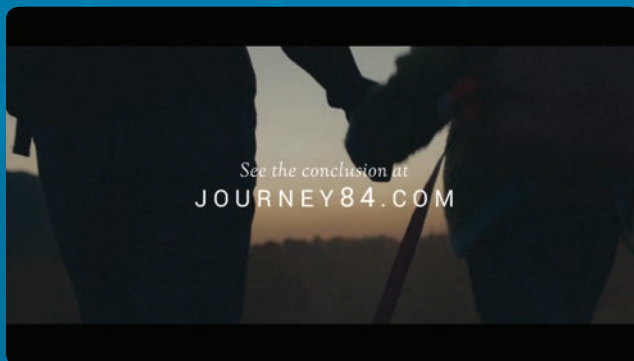
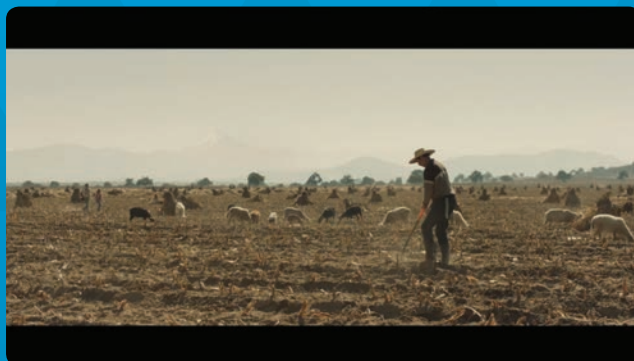
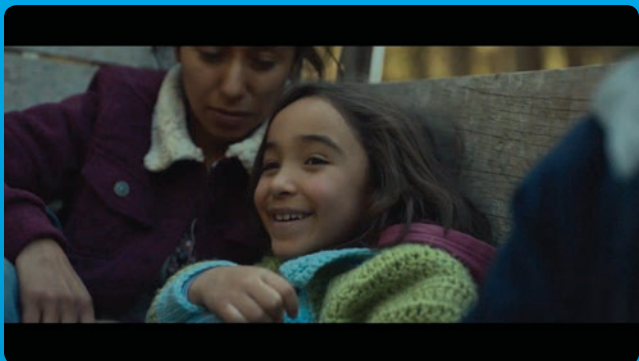
Cole Webley, Director/Sanctuary

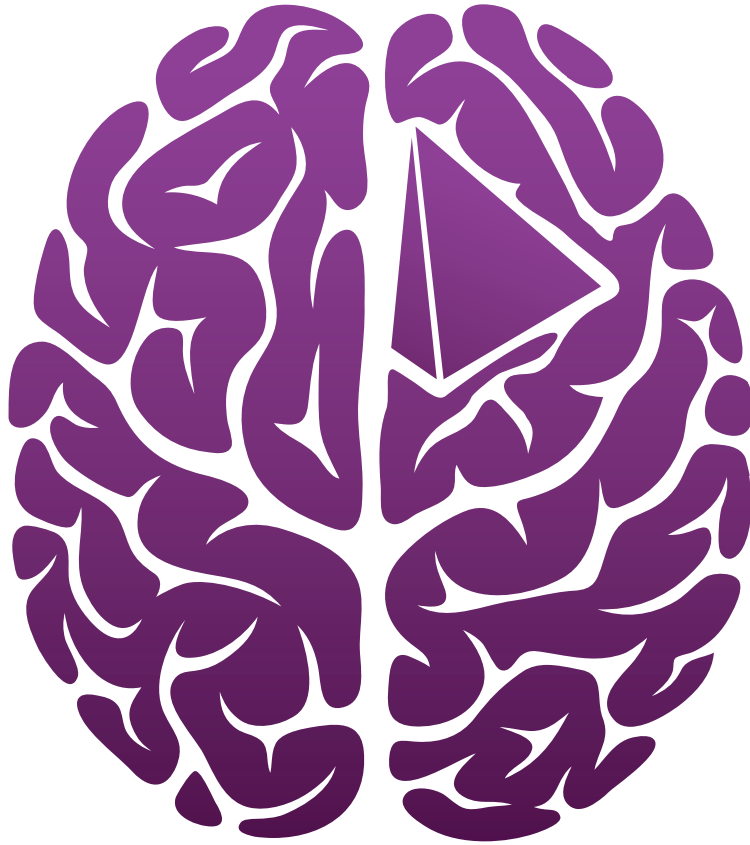
Justin Brown, Director of Photography

Preston Lee, Executive Producer/Sanctuary

Christopher Cho, Line Producer/Sanctuary







We're proud to recognize
the inspiring creative work
that our region produces.

UPMC
LIFE CHANGING MEDICINE



Friend. Partner. Flogger of Pixels.



doughnut connoisseur

nihilism enthusiast

desk toy consultant

easy-going yet hard-working

designer for hire



bigbaldmatt.com  **724.494.0742**



**Congratulations
to the Winners of the
2018 American Advertising Awards
from the Pittsburgh Ad Fed
and Pittsburgh Ad 2**



**Thumbs up to
Pittsburgh's creative
geniuses!**



Market Research • harlangroupltd.com • 412.302.1122

DAVE'S PROBABLY UP THERE RIGHT NOW
GIVING GOD SOME POINTERS ON WHAT TO CREATE NEXT.

Thank you Dave for a lifetime of inspiring us all.



BRUNNER
a BRUNNENWORKS Co.

THE LEADING INDEPENDENT
PAPER DISTRIBUTOR

— since 1859 —



PAPER



DIGITAL
SUBSTRATES



ENVELOPES



PACKAGING



WIDE
FORMAT

1005 Beaver Avenue
Pittsburgh, PA 15233
800.292.9664

Learn more online at LindenmeyrMunroe.com



con·ta·gious

/kən'tājəs/
adjective

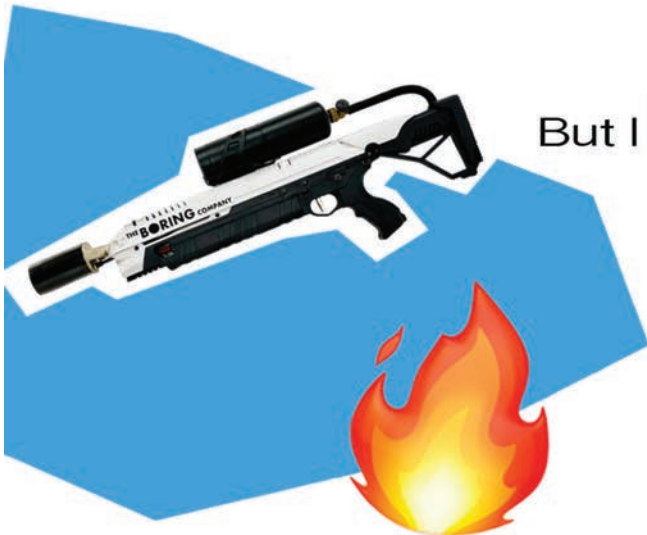
(of an emotion, feeling, or attitude)
likely to spread to and affect others

Congratulations to our winners
who do this really well.

Contagious
MUSIC

contagious-music.com | 412.281.1541

I could have bought an
Elon Musk **flamethrower**.



But I **REALLY** want to work with you so
I got this ad space instead!

paid for by
flamethrowerless



dk|DAVIDKELLY.co

The background of the entire image is a solid orange color. Overlaid on this is a large, dynamic graphic of numerous 3D wooden blocks of various sizes and shapes. These blocks appear to be falling from the top right corner, creating a sense of motion and volume. The blocks are rendered with soft shadows and highlights, giving them a realistic, three-dimensional appearance.

massive media

beyond big.

VIDEO PRODUCTION • EDITING • ANIMATION • GRAPHIC DESIGN
PROJECTION • LIGHTING • LIVE SOUND • AUDIO PRODUCTION

MassivePGH.com
info@massivepgh.com
412.780.9732



We think before you act.

Your success is our success.

Congratulations to our agency friends!

Can you believe we get to do this for a living?

campos.com

campos
RESEARCH STRATEGY



**NOTE: THE RESULTS OF TONIGHT'S
SHOW ARE NOT OFFICIAL
UNTIL WINNERS ARE TESTED.**

Congratulations for doing whatever it takes.

UPPERCUT

thisisuppercut.com



MEMBERSHIP DIRECTORY

Abad, Christian

University of Pittsburgh
3530 Louisa St.
Apt 24
Pittsburgh, PA 15213
267-566-2283
mea93@pitt.edu
Pitch Student Membership

Ackermann, Brian

Havas PR US
Account Coordinator
925 Liberty Avenue
Pittsburgh, PA 15222
(412)477-4312
backermann24@gmail.com
Ad 2 Member

Aicher, Madison

Point Park University
322 Boulevard of the Allies
Pittsburgh, PA 15222
(610)470-4359
mjaiche@pointpark.edu
Pitch Student Membership

Alaquiva, Emma

Ya Momz House
Multimedia Professional
PO Box 2661
Pittsburgh, PA 15230
(412)478-7695
emma.alaquiva@gmail.com
Individual Membership

Aldeman, Jaclyn

Penn State University
412 W. College Avenue
1207
State College, PA 16801
(304)685-7098
jsa5256@psu.edu
Pitch Student Membership

Alford, William

University of Pittsburgh
391 S. Bouquet St
Pittsburgh, PA 15213
717-903-9455
wpa5@pitt.edu
Pitch Student Membership

Allerton, Geoffrey

Highmark Health
Copywriter
120 Fifth Avenue
FAP 1212
Pittsburgh, PA 15222
(412)544-2524
geoffrey.allerton@highmarkhealth.org
Individual Membership

Anderson, Rob

Jim Shorkey Auto Group
Digital Marketing Specialist
114 Lee Drive
Belle Vernon, PA 15012
(412)260-6131
rta3958@gmail.com
Ad 2 Member

Ang, Cavan

Penn State University
310 Plaza Drive
State College, PA 16801
(814)883-9648
cavan0804@yahoo.com
Pitch Student Membership

Bacik, Marty

University of Pittsburgh
3990 Fifth Ave
Bruce Hall 1009
Pittsburgh, PA 15213
412-316-7447
mjbacik@gmail.com
Pitch Student Membership

Balent, Rachel

University of Pittsburgh
3990 Fifth Ave
Amas Hall 209-1
Pittsburgh, PA 15213
484-941-1041
rab193@pitt.edu
Pitch Student Membership

Ball, Tracy

Copywriter
2359 Railroad Street
Apartment 2406
Pittsburgh, PA 15222
(503)805-1149
tracy.ball@comcast.net
Individual Membership

Barkey, Chuck

Chemistry
VP, Creative Director
Oliver Building
535 Smithfield Street
Pittsburgh, PA 15222
(412)642-0642
chuck@visithelab.com
Gold Corporate Member

Barszczowski, Autumn

Point Park University
2408 Berg Street
Pittsburgh, PA 15203
(412)867-5981
adbarsz@pointpark.edu
Pitch Student Membership

Bayer, Lauren

2393 Rihn Strasse
Gibsonia, PA 15044
(724)713-4206
lbayer37@gmail.com
Ad 2 Member

Beattie, Kristen

St. Clair Hospital
Manager, Organizational Advancement
1000 Bower Hill Road
Pittsburgh, PA 15243
(412)942-4000
kristen.beattie@stclair.org
Silver Corporate Member

Belovich, Kayla

Point Park University
304 Naomi Road
Fayette City, PA 15438
(724)366-5564
kaylabelovich@gmail.com
Pitch Student Membership

Bialosky, Beth

Pittsburgh Post Gazette
Multimedia Account Executive
4702 Woodlake Drive
Allison Park, PA 15101
(412)735-2341
bethbialosky@gmail.com
Ad 2 Member

Blasingame, Josh

MARC USA
Creative Director
4 Station Square
Suite 500
Pittsburgh, PA 15219
(412)562-2000
jblasingame@marcusa.com
Gold Corporate Member

Blume, Ireland

Youngstown State University
1502 Tamarisk Trail
Poland, OH 44514
(330)519-8124
iablume@student.ysu.edu
Pitch Student Membership

Boban, Kris

Animal
Animator/Illustrator/Director
100 First Avenue
Suite 1100
Pittsburgh, PA 15222
(412)566-5656
kris@animaleast.com
Gold Corporate Member



MEMBERSHIP DIRECTORY

Bolewitz, Amie

CivicScience
Director of Marketing
6101 Penn Avenue
5th Floor
Pittsburgh, PA 15206
(412)281-1954
amie@civicscience.com
Silver Corporate Member

Bollinger, Michael

Smith Brothers Agency
President
116 Federal Street
Pittsburgh, PA 15212
(412)359-7200
michael.b@smithbrosagency.com
Silver Corporate Member

Bono, Natalie

University of Pittsburgh
356 Atwood St
Apt 1
Pittsburgh, PA 15213
484-894-6442
nrb43@pitt.edu
Pitch Student Membership

Brady, Annette

CivicScience
VP Business Development
6101 Penn Avenue
5th Floor
Pittsburgh, PA 15206
(412)281-1954
annette@civicscience.com
Silver Corporate Member

Brettholle, Daniel

Apple Box Studios
Creative Director
1243 Penn Avenue
2nd Floor
Pittsburgh, PA 15222
(412)642-3971
danb@appleboxstudios.com
Silver Corporate Member

Brookins, Chris

CivicScience
Business Development
6101 Penn Avenue
5th Floor
Pittsburgh, PA 15206
(412)281-1954
chrisb@civicscience.com
Silver Corporate Member

Brunner, Michael

Brunner
CEO
11 Stanwix
5th Floor
Pittsburgh, PA 15222
(412)995-9500
mbrunner@brunnerworks.com
Gold Corporate Member

Buchheit, Nicholas

Covalent
Creative
5877 Commerce
#218
Pittsburgh, PA 15206
(412)477-7667
nicholas@wearecovalent.com
Silver Corporate Member

Bupp, Rob

Chemistry
VP, Creative Director
Oliver Building
535 Smithfield Street
Pittsburgh, PA 15222
(412)642-0642
bupp@visittthelab.com
Gold Corporate Member

Burkey, Lauren

Media IQ
Account Executive
812 South Sharp Street
Baltimore, MD 21230
(412)849-8051
lauren.burkey@mediaiqdigital.com
Ad 2 Member

Bush, Adam

Pittsburgh Post-Gazette
Director of Advertising and Digital Initiatives
2201 Sweeney Drive
Clinton, PA 15026
(412)263-1758
abush@post-gazette.com
Silver Corporate Member

Carlton, Andrew

Actual Size
Director of Marketing & Business Development
2746 Baum Boulevard
Pittsburgh, PA 15206
(412)363-2100
andy@actualsize.com
Silver Corporate Member

Caruso, John

Elisco Advertising
Business Development Director
3707 Butler Street
Pittsburgh, PA 15201
(724)464-7579
jcaruso@elisco.com
Ad 2 Member

Case, David

PMI
President/CEO
202 Fifth Avenue
The Buhl Building
Pittsburgh, PA 15222
(412)281-8500
dcase@pmidigital.com
Silver Corporate Member

Casey, Carolyn

Point Park University
1711 Larkins Way
Pittsburgh, PA 15203
(570)687-8759
carly84casey@gmail.com
Pitch Student Membership

Cavanaugh, D.J.

CivicScience
VP Sales
6101 Penn Avenue
5th Floor
Pittsburgh, PA 15206
(412)281-1954
dj@civicscience.com
Silver Corporate Member

Caylor, Matt

MANSI Media
Director of Interactive Advertising
3899 North Front Street
Harrisburg, PA 17110-1583
(717)703-3040
matthewc@mansimedia.com
Individual Membership

Chestney, Kim

Pittsburgh Technology Council
Director, Creative Technology Network
2000 Technology Drive
#100
Pittsburgh, PA 15219
(412)918-4223
kchestney@pghtech.org
Individual Membership

Cicco, Adam

MARC USA
Associate Creative Director
4 Station Square
Suite 500
Pittsburgh, PA 15219
(412)562-2000
acicco@marcusa.com
Gold Corporate Member

Ciranni, Stephanie

DQE Communications
Marketing Specialist
3567 Myrna Drive
Bethel Park, PA 1501
(412)715-1068
saciranni@gmail.com
Individual Membership

Clarke, Tripp

321Blink
President
25 Brilliant Avenue
Aspinwall, PA 15215
(412)799-0321
tripp@@321blink.com



MEMBERSHIP DIRECTORY

Connolly, Kelsey

John Carroll University
120 McDonald Drive
Cranberry Township, PA 16066
(724)591-1389
kconnolly18@jcu.edu
Pitch Student Membership

Cotter, Bill

Pittsburgh Post-Gazette
Senior Director of Advertising
2201 Sweeney Drive
Clinton, PA 15026
(412)263-1354
bcotter@post-gazette.com
Silver Corporate Member

Cotton, Rachel

Penn State University
402 South New Middletown Road
Media, PA 19063
(610)357-7234
ryc5136@psu.edu
Pitch Student Membership

Crytzer, Robert

St. Clair Hospital
Manager, Hospital Communications & Media
1000 Bower Hill Road
Pittsburgh, PA 15243
(412)942-4000
robert.crytzer@stclair.org
Silver Corporate Member

Dehner, Dan

Chemistry
Chief Interactive Officer
Oliver Building
535 Smithfield Street
Pittsburgh, PA 15222
(412)642-0642
dan@visithelab.com
Gold Corporate Member

DeSarno, Evie

Pittsburgh Advertising Federation
Executive Director
PO Box 15055
Pittsburgh, PA 15237
(412)996-9266
evie@pghadfed.org
Executive Director

Devine, Dylan

Actual Size
Graphic Designer
2746 Baum Boulevard
Pittsburgh, PA 15206
(412)363-2100
dylan@actualsize.com
Ad 2 Member

Devinney, Jenna

Penn State University - Behrend
1218 Blue Jay Drive
Pittsburgh, PA 15243
(412)215-5189
jmd6129@psu.edu
Pitch Student Membership

Dick, John

CivicScience
CEO and Founder
6101 Penn Avenue
5th Floor
Pittsburgh, PA 15206
(412)281-1954
jd@civicscience.com
Silver Corporate Member

Dille, Jason

Chemistry
VP, Media
Oliver Building
535 Smithfield Street
Pittsburgh, PA 15222
(412)642-0642
jason@visithelab.com
Gold Corporate Member

DiNapoli, Darin

MARC USA
Senior Multimedia Specialist
4 Station Square
Suite 500
Pittsburgh, PA 15219
(412)562-2000
ddinapoli@marcusa.com
Individual Membership

DiNuzzo, Nora

Smith Brothers Agency
Business Development Manager
116 Federal Street
Pittsburgh, PA 15212
(412)359-7200
nora.d@smithbrosagency.com
Silver Corporate Member

Doran, Casey

University of Pittsburgh
323 Semple Street
Pittsburgh, PA 15213
412-609-4325
cjd75@pitt.edu
Pitch Student Membership

Doring, Jason

AlphaGraphics
Art Director
814 Penn Avenue
Pittsburgh, PA 15222
(412)337-6139
jason.doring@alphagraphics.com
Individual Membership

DuMont, Jacqueline

Penn State University - Behrend
511 Sword Dance Place
Cranberry Township, PA 16066
(724)256-1924
dumontjk@gmail.com
Pitch Student Membership

Dunglinson, Tracy

PMI
Director of Business Development
202 Fifth Avenue
The Buhl Building
Pittsburgh, PA 15222
(412)281-8500
tracy@pmdigital.com
Silver Corporate Member

Dunlap, Wesley

552 N. Neville Street
PH #2
Pittsburgh, PA 15213
(561)558-3382
wesdun15@gmail.com
Ad 2 Member

Dziubek, Kathy

Animal
Owner/Executive Producer
100 First Avenue
Suite 1100
Pittsburgh, PA 15222
(412)566-5656
kathy@animaleast.com
Gold Corporate Member

Ebbecke, Greg

Harmelin Media
VP Business Intelligence
525 Righters Ferry Road
Bala Cynwyd, PA 19004
(267)948-2261
gebbecke@harmelin.com
Individual Membership

Edwards, Greg

MARC USA
Creative Director
4 Station Square
Suite 500
Pittsburgh, PA 15219
(412)562-2000
gedwards@marcusa.com
Gold Corporate Member

Emmerling, Jim

Em-media
President
2728 Sunset Boulevard
Steubenville, PA 43952
(740)264-2186
james@em-media.com
Individual Membership



MEMBERSHIP DIRECTORY

Ertl, Claire

The Westmoreland Museum of American Art
Director of Marketing & Public Relations
221 N. Main Street
Greensburg, PA 15601
(724)837-1500
certl@thewestmoreland.org
Individual Membership

Etzi, David

Penn State University
0312 Panofsky
University Park, PA 16802
(412)477-3536
etzi.dj@gmail.com
Pitch Student Membership

Fabrizi, Michele

MARC USA
President & CEO
4 Station Square
Suite 500
Pittsburgh, PA 15219
(412)562-2000
mfabrizi@marcusa.com
Gold Corporate Member

Faines, Jennifer

PR Digital Communications
President
Pittsburgh, PA 15222
(412)559-2860
jennifer.faines@gmail.com
Individual Membership

Federick, John

University of Pittsburgh
158 Chesterfield Rd
Pittsburgh, PA 15213
724-719-1290
jof46@pitt.edu
Pitch Student Membership

Filipek, Daniel

Apple Box Studios
Vice President, Client Services
1243 Penn Avenue
2nd Floor
Pittsburgh, PA 15222
(412)642-3971
dan@appleboxstudios.com
Silver Corporate Member

Flagg, Justin

MOXIE USA
Associate Design Director
611 William Penn Place
Suite 900
Pittsburgh, PA 15219
(412)471-5300
justin.flagg@moxieusa.com
Silver Corporate Member

Francioni, Giuseppe

G and Co Design
President/Creative Director
334 First Street
Piazza DaVinci
Pittsburgh, PA 15215
(412)719-7093
g@gandcodesign.com
Individual Membership

Fronzaglio, Alexia

TEKsystems Digital
Account Manager
8 Penn Center West
Pittsburgh, PA 15276
(412)505-2915
afronzag@teksystems.com
Ad 2 Member

Galatis, Jon

MARC USA
VP/Group Account Director
4 Station Square
Suite 500
Pittsburgh, PA 15219
(412)562-2000
dshaw@marcusa.com
Gold Corporate Member

Gardinier, Rick

Brunner
Partner/Chief Digital Officer
11 Stanwix
5th Floor
Pittsburgh, PA 15222
(412)995-9500
rgardinier@brunnerworks.com
Gold Corporate Member

Garrison, Bill

Garrison Hughes
Partner/Copywriter
100 First Avenue
Suite 200
Pittsburgh, PA 15222
(412)338-0123
bgarrison@garrisonhughes.com
Silver Corporate Member

George, Ian

Actual Size
Graphic Designer
2746 Baum Boulevard
Pittsburgh, PA 15206
(412)363-2100
ian@actualsize.com
Ad 2 Member

Giacobbi, Amanda

Eat'n Park Hospitality Group
Director of Restaurant Marketing
285 East Waterfront
Suite 200
Homestead, PA 15120
Silver Corporate Member

Giunta, Mike

Garrison Hughes
Writer
100 First Avenue, Suite 200
Pittsburgh, PA 15222
(412)338-0123
mgiunta@garrisonhughes.com
Silver Corporate Member

Goldsmith, Scott

Scott Goldsmith Photography
Photographer
47 N. Harrison Avenue
Pittsburgh, PA 15202
(412)551-4938
scott@scottgoldsmith.com
Individual Membership

Good, Lara

Penn State University
315 Haller Hall
University Park, PA 16802
(973)255-8424
lrgood97@gmail.com
Pitch Student Membership

Goode, Madeline

University of Pittsburgh
251 Meyron Ave
Pittsburgh, PA 15213
412-992-7019
mag263@pitt.edu
Pitch Student Membership

Gozde, Idil

Animal
Motion Design Director
100 First Avenue, Suite 1100
Pittsburgh, PA 15222
(412)566-5656
idil@animaleast.com
Gold Corporate Member

Grandy, Krystle

Grandy Consulting
Owner
Pittsburgh, PA
(724)814-7858
krystlegrandy@yahoo.com
Ad 2 Member

Hadlock, Bryan

MARC USA
EVP/Chief Creative Officer
4 Station Square
Suite 500
Pittsburgh, PA 15219
(412)562-2000
bhadlock@marcusa.com
Gold Corporate Member

Hahn, Madison

University of Pittsburgh
330 Melwood Ave, Apt 3
Pittsburgh, PA 15213
610-428-8656
mrh104@pitt.edu
Pitch Student Membership



MEMBERSHIP DIRECTORY

Halili, Amanda

University of Pittsburgh
3719 Parkview Ave
Pittsburgh, PA 15213
240-507-9025
amanda.r.halili@gmail.com
Pitch Student Membership

Hannan, Julia

PMI
VP, Production Services
202 Fifth Avenue
The Buhl Building
Pittsburgh, PA 15222
(412)281-8500
jhannan@pmdigital.com
Silver Corporate Member

Hansen, Deb

Pittsburgh Post-Gazette
Real Estate & Recruitment Manager
2201 Sweeney Drive
Clinton, PA 15026
(412)263-1655
dhansen@post-gazette.com
Silver Corporate Member

Hartman, David

PMI
EVP/General Manager
202 Fifth Avenue
The Buhl Building
Pittsburgh, PA 15222
(412)281-8500
dhartman@pmdigital.com
Silver Corporate Member

Hastedt, Jeffrey

Brkthru Digital
Co-founder/Managing Director
600 Third Avenue
2nd Floor
New York, NY 10016
(248)928-6275
jeff@brkthrudigital.com
Individual Membership

Hay, Steve

Smith Brothers Agency
VP Client Service
116 Federal Street
Pittsburgh, PA 15212
(412)359-7200
steve.h@smithbrosagency.com
Silver Corporate Member

Haywood, Kayla

Youngstown State University
910 Crestwood Drive
Brookfield, OH 44403
(724)815-7671
kmhaywood@student.ysu.edu
Pitch Student Membership

Heaps, Alesis

321Blink
Videographer & Editor
25 Brilliant Avenue
Aspinwall, PA 15215
(412)799-0321
alesis@321blink.com

Heaps, Zakk

321Blink
Senior Producer & Director
25 Brilliant Avenue
Aspinwall, PA 15215
(412)799-0321
zakk@321blink.com

Hefferan, Marissa

Clarion State University
647 Wood Street
Apartment 4
Clarion, PA 16214
(724)622-8641
m.m.hefferan@eagle.clarion.edu
Pitch Student Membership

Heidenreich, David

Smith Brothers Agency
VP Client Service
116 Federal Street
Pittsburgh, PA 15212
(412)359-7200
david.h@smithbrosagency.com
Silver Corporate Member

Hildebrand, Matt

InnerWorkings
ACD, Brand Designer for Print & Screen
116 Allegheny Center
2nd Floor
Pittsburgh, PA 15212
(724)494-0742
bigbaldmatt@gmail.com
Individual Membership

Hilty, Jeffrey

Covalent
Partner/Producer
5877 Commerce
#218
Pittsburgh, PA 15206
(412)477-7667
jeffrey@wearecovalent.com
Silver Corporate Member

Hnat, Stephanie

Art Hn'at
Graphic Designer/Illustrator
22 Huster Place
Carnegie, PA 15106
(412)506-1375
steph.hnat@gmail.com
Ad 2 Member

Hughes, Dave

Garrison Hughes
Partner/Creative Director
100 First Avenue
Suite 200
Pittsburgh, PA 15222
(412)338-0123
dhughes@garrisonhughes.com
Silver Corporate Member

Hylton, Hannah

University of Pittsburgh
3508 Cable Place
Apt 3
Pittsburgh, PA 15213
415-418-8668
hah75@pitt.edu
Pitch Student Membership

Jackson, Aaron

Point Park University
204 Ogden Nash Dr
412-841-5312
arjacks@pointpark.edu
Pitch Student Membership

Jackson, Shawn

PMI
Director of Audio Services
202 Fifth Avenue
The Buhl Building
Pittsburgh, PA 15222
412281-8500
sjackson@pmdigital.com
Silver Corporate Member

Jacoud, Adriana

MOXIE USA
Design Director
611 William Penn Place
Suite 900
Pittsburgh, PA 15219
(412)471-5300
adriana.jacoud@moxieusa.com
Silver Corporate Member

James, Shania

Point Park University
201 Wood Street
BA 138
Pittsburgh, PA 15222
(240)727-1286
smjames@pointpark.edu
Pitch Student Membership

Jameson, Duncan

Duncan Jameson Media
Owner
1724 Fox Chapel Road
Pittsburgh, PA 15238
(412)508-4921
duncanjamesonmedia@hotmail.com
Individual Membership



MEMBERSHIP DIRECTORY

Jezowicz, Chris

Chris Jezowicz LLC
Owner
231 Republic Street
Pittsburgh, PA 15211
(412)596-5278
cjezowicz@gmail.com
Ad 2 Member - President

Joseph, Matthew

University of Pittsburgh
3817 Dawson Street
Apt 102
Pittsburgh, PA 15213
404-307-2877
mattjoseph14@gmail.com
Pitch Student Membership

Kaneta, Samantha

Apple Box Studios
Director of Business Development
1243 Penn Avenue
2nd Floor
Pittsburgh, PA 15222
(412)642-3971
samantha@appleboxstudios.com
Silver Corporate Member

Kefalos, Lisa

Apple Box Studios
Account Executive
1243 Penn Avenue
2nd Floor
Pittsburgh, PA 15222
(412)642-3971
lisa@appleboxstudios.com
Silver Corporate Member

Kelly, David

David Kelly
530 N Chestnut Street
Derry, PA 15627
(323)609-3038
davidkellyco@gmail.com
Ad 2 Member

Kiernan, Bob

Actual Size
Principal & Chief Creative Director
2746 Baum Boulevard
Pittsburgh, PA 15206
(412)363-2100
bob@actualsize.com
Silver Corporate Member

Killen, Michael

Animal
Owner
100 First Avenue
Suite 1100
Pittsburgh, PA 15222
(412)566-5656
michael@animaleast.com
Gold Corporate Member

King, Melissa

MNI
Account Executive
147 Swain Hill Road
Harmony, PA 16037
(412)204-8605
missmelisk@gmail.com
Individual Membership

Kitchin, Jennie

Digilant
Director of Partnerships, East
1115 Broadway
10th Floor
New York, NY 10010
(650)888-7213
jennie.kitchin@digilant.com
Individual Membership

Knieriem, Kris

Blender, Inc.
President/Chief Creative Officer
229 Spahr Street
Suite B
Pittsburgh, PA 15232
(412)901-5322
kris@blenderadv.com
Individual Membership

Knieriem, Kristen

Blender, Inc.
President/Chief Creative Officer
229 Spahr Street
Suite B
Pittsburgh, PA 15232
(412)901-5322
kris@blenderadv.com
Individual Membership

Kralik, Matt

University of Pittsburgh
218 N. Craig St.
Apt 7
Pittsburgh, PA 15213
734-276-5640
mpk42@pitt.edu
Pitch Student Membership

Kubiczki, Rebecca

University of Pittsburgh
3597 Cable Place
Pittsburgh, PA 15213
412-735-6090
rmk78@pitt.edu
Pitch Student Membership

Kunselman-McMunn, Corinne

Garrison Hughes
Media Planner/Buyer
100 First Avenue
Suite 200
Pittsburgh, PA 15222
(412)338-0123
ckunselman@garrisonhughes.com
Silver Corporate Member

Lake, Michele

Penn State University
254 S. Burrows Street
Apartment 5
State College, PA 16801
(717)994-5142
mrl5419@psu.edu
Pitch Student Membership

Lamphier, Jon

Highmark Health
Senior Copywriter
120 Fifth Avenue
FAP 1212
Pittsburgh, PA 15222
(860)324-2793
jonathan.lamphier@highmarkhealth.org
Individual Membership

Leachko, Joe

StudioME, LLC
Co-founder
31 Roanoke Street
Pittsburgh, PA 15203
(412)651-0158
joe@studiome.me
Ad 2 Member

Ledford, Natalie

Penn State University
203 Sunset Lane
Lincoln University, PA 19352
(610)470-1093
nel5108@psu.edu
Pitch Student Membership

Leon, Monica

Penn State University
463 E. Beaver Avenue
Bryce Jordan Towers 206
State College, PA 16801
(610)772-4881
mil5506@psu.edu
Pitch Student Membership

Levey, David

University of Pittsburgh
3790 University Dr
Pittsburgh, PA 15213
267-907-3492
del45@pitt.edu
Pitch Student Membership

Levy, Dave

Levy MG
President
4 Smithfield Street
Pittsburgh, PA 15222
(412)201-1900
davelevy@levymgi.com
Individual Membership



MEMBERSHIP DIRECTORY

Lewis, Rich

Eat'n Park Hospitality Group
Director, Creative Services
285 East Waterfront
Suite 200
Homestead, PA 15120
rblewis@eatnpark.com
Silver Corporate Member

Lintelman, Andrew

University of Pittsburgh
375 Meyran Ave
Apt 24
Pittsburgh, PA 15213
412-295-8221
andrew.j.lintelman@gmail.com
Pitch Student Membership

Loesch, Bobbie

iHeartMedia
Senior VP Sales Pgh/WV Region
200 Fleet Street
Pittsburgh, PA 15220
(412)443-0019
bobbie@iheartmedia.com
Individual Membership

Luo, Yinan

University of Pittsburgh
4628 Bayard St
Apt 211
Pittsburgh, PA 15213
412-193-1238
yil133@pitt.edu
Pitch Student Membership

Magill, Ian

Chemistry
ACD/Art Director
Oliver Building
535 Smithfield Street
Pittsburgh, PA 15222
(412)642-0642
ian@visithelab.com
Gold Corporate Member

Mares, Stephanie

Point Park University
68 Southern Avenue
Pittsburgh, PA 15211
(412)553-9591
stephanielynnmares@gmail.com
Pitch Student Membership

McClain, Shannon

Penn State University
501 E. Beaver Avenue
State College, PA 16801
(330)307-6521
sxm5717@psu.edu
Pitch Student Membership

McCoy, Morgan

Point Park University
613 Alger Street
Apartment 3R
Pittsburgh, PA 15207
(412)508-4367
mpmccoy@pointpark.edu
Pitch Student Membership

McFadden, Ann

Brunner
Creative Director Emeritus
11 Stanwix
5th Floor
Pittsburgh, PA 15222
(412)995-9500
michaelwertz@appleboxstudios.com
Gold Corporate Member

McGrath, Tony

Pittsburgh Post-Gazette
City/East Territory Manager
2201 Sweeney Drive
Clinton, PA 15026
(412)263-1365
tmcgrath@post-gazette.com
Silver Corporate Member

McLaughlin, Tim

321Blink
President
25 Brilliant Avenue
Aspinwall, PA 15215
(412)799-0321
tim@321blink.com

McNamara, Kate

Chemistry
Writer
Oliver Building
535 Smithfield Street
Pittsburgh, PA 15222
(412)642-0642
kate@visithelab.com
Gold Corporate Member

Megaloudis, Martyn

University of Pittsburgh
190 Lothrop St
Pittsburgh, PA 15213
908-644-4880
mem315@pitt.edu
Pitch Student Membership

Miller, John

MarketSpace Communications
Creative Director
217 Executive Drive
Suite 304
Cranberry Township, PA 16066
(724)778-9933
jrmiller@marketspaceagency.com
Individual Membership

Mizrahi, Laurie

Mizrahi, Inc
President & CEO
650 Smithfield Street
Suite 1525
Pittsburgh, PA 15222
(412)281-5025
lmizrahi@mizrahionline.com
Individual Membership

Modafarri, Mary Kay

ServiceEffect
Founder, CEO & Chief Service Officer
(412)849-5119
mk@serviceeffect.com
Gold Corporate Member

Morgan, Scott

Brunner
President
11 Stanwix
5th Floor
Pittsburgh, PA 15222
(412)995-9500
smorgan@brunnerworks.com
Gold Corporate Member

Murphy Kiernan, Mary

Actual Size
President & Chief Strategy Officer
2746 Baum Boulevard
Pittsburgh, PA 15206
(412)363-2100
mary@actualsize.com
Silver Corporate Member

Murray, Jackie

Brunner
VP, Creative Director
11 Stanwix
5th Floor
Pittsburgh, PA 15222
(412)995-9500
jmurray@brunnerworks.com
Gold Corporate Member

Murtaugh, Shea

Hoffmann Murtaugh Advertising
President
355 Chestnut Street
Sewickley, PA 15143
(412)7418618
shea@hoffmannmurtaugh.com
Individual Membership

Nagy, Darice

Green Dot PR
President
175 Shady Lane
Apollo, PA 15613
(814)771-0923
darice@greendotpr.com
Individual Membership



MEMBERSHIP DIRECTORY

Necciai, Dominic

PNC
Investment Officer
304 Half West Street
Pittsburgh, PA 15221
(724)288-8028
dominicnecciai@gmail.com
Individual Membership

Neville, Matt

2111 Sarah Street
Pittsburgh, PA 15203
(412)667-0463
mneville11@gmail.com
Ad 2 Member

Nigro, Beth

MOXIE USA
EVP/Managing Director
611 William Penn Place
Suite 900
Pittsburgh, PA 15219
(412)471-5300
beth.nigro@moxieusa.com
Silver Corporate Member

Nikolakopoulos, Elliot

St. Clair Hospital
Marketing & Graphic Design Specialist
1000 Bower Hill Road
Pittsburgh, PA 15243
(412)942-4000
elliott.nikolakopoulos@stclair.org
Silver Corporate Member

Noss, Lindsey

University of Pittsburgh
5254 Lantern Hill Drive Extension
Pittsburgh, PA 15236
412-874-4461
lmn46@pitt.edu
Pitch Student Membership

O'Connell, Kevin

Eat'n Park Hospitality Group
Chief Marketing Officer
285 East Waterfront
Suite 200
Homestead, PA 15120
Silver Corporate Member

Oleynik, Ally

Animal
Producer
100 First Avenue
Suite 1100
Pittsburgh, PA 15222
(412)566-5656
ally@animaleast.com
Gold Corporate Member

Olschesky, Marianne

St. Clair Hospital
Community Outreach and Marketing Specialist
1000 Bower Hill Road
Pittsburgh, PA 15243
(412)942-4000
marianne.olschesky@stclair.org
Silver Corporate Member

Pacifico, Kristina

Point Park University
2336 Murray Avenue, Floor 2
Pittsburgh, PA 15217
(412)759-7098
kmpacif@pointpark.edu
Pitch Student Membership

Pai, Megha

Havas PR
Account Coordinator
925 Liberty Avenue
Pittsburgh, PA 15222
(727)348-8866
megha.pai@havas.com
Ad 2 Member

Parise, Dax

Upper Cut
Partner/Executive Producer
4 Smithfield Street
10th Floor
Pittsburgh, PA 15222
(412)434-6070
dax@thisissuppercut.com
Individual Membership

Parish, Keith

StudioME
Co-founder
31 Roanoke Street
Pittsburgh, PA 15203
(412)951-3331
keith@studiome.com
Individual Membership

Parlak, Kelly

Penn State University
2420 Bonnie Dell Drive
South Park, PA 15129
(412)862-8727
klp5436@psu.edu
Pitch Student Membership

Patton, Nathaniel

University of Pittsburgh
603 Fair Street
Monongahela, PA 15063
724-518-2318
nrp25@pitt.edu
Pitch Student Membership

Perry, Nicholas

Youngstown State University
205 N. Cadillac Drive
Boardman, OH 44512
(330)720-1121
nick@nickperryart.com
Pitch Student Membership

Pferdehirt, Valerie

Steel City Media
Sales Manager
37C Churchill Road
Pittsburgh, PA 15235
(412)559-1730
valerie@steelcitymedia.com
Individual Membership

Piekarski, Troy

Pittsburgh Post-Gazette
Manager of Digital Revenue
2201 Sweeney Drive
Clinton, PA 15026
(412)263-1776
tpiekarski@post-gazette.com
Silver Corporate Member

Pizzica, Rob

Chemistry
VP, Creative Services
Oliver Building
535 Smithfield Street
Pittsburgh, PA 15222
(412)642-0642
rob@visitthelab.com
Gold Corporate Member

Pieczkowski, Mike

Reed Smith LLP
Business Development Director
212 Bertha Street
Pittsburgh, PA 15211
4123037645
mikepiecz12@gmail.com
Ad 2 Member

Popelka, Dave

Garrison Hughes
Strategy & Business Development
100 First Avenue
Suite 200
Pittsburgh, PA 15222
(412)338-0128
dpopelka@garrisonhughes.com
Silver Corporate Member

Poprocky, Nicholas

Point Park University
402 Mower Drive
Pittsburgh, PA 15239
(412)398-7455
nmpopro@pointpark.edu
Pitch Student Membership

Potts, George

Brunner
VP, Director Social Media
11 Stanwix Street
5th Floor
Pittsburgh, PA 15222
(412)995-9636
gpotts71@gmail.com
Individual Membership



MEMBERSHIP DIRECTORY

Psica, Kristen

Comcast Spotlight
Associate Account Executive
346 Marguerite Avenue
Wilmerding, PA 15148
(412)402-8261
kristenpsica@gmail.com
Ad 2 Member

Quickel, Valerie

University of Pittsburgh
3440 Louisa St., Apt 5
Pittsburgh, PA 15213
717-668-4230
vcq1@pitt.edu
Pitch Student Membership

Reich, Estelle

Penn State University
1531 Forestview Drive
Pittsburgh, PA 15234
(412)334-8587
estellereich@gmail.com
Pitch Student Membership

Robertson, Gordon

Hullabaloo Agency
Principal/Creative
130 Altadena Drive
Pittsburgh, PA 15228
(630)747-4560
gordon.robertson@mac.com
Individual Membership

Rodia, Alesis

Covalent
Partner
5877 Commerce #218
Pittsburgh, PA 15206
(412)477-7667
alex@wearecovalent.com
Silver Corporate Member

Salamon, Drew

iHeartMedia
Senior Vice President Sales
200 Fleet Street
Pittsburgh, PA 15017
(412)919-8501
drewsalamon@iheartmedia.com
Individual Membership

Saporito, Matthew

University of Pittsburgh
Pittsburgh, PA 15213
440-665-0007
mls219@pitt.edu
Pitch Student Membership

Schapiro, Rob

Brunner
Chief Creative Officer
11 Stanwix
5th Floor
Pittsburgh, PA 15222
(412)995-9500
rschapiro@brunnerworks.com
Gold Corporate Member

Schmitt, Annabelle

Penn State University
226 S Allen Street 101
State College, PA 16801
(610)504-1676
aschmitt915@gmail.com
Pitch Student Membership

Schmitt, Evan

Voice Actor
7720 Francis Street
Swissvale, PA 15218
(509)304-4309
schmitt.evan@gmail.com
Ad 2 Member

Serbin, Matthew

University of Pittsburgh
256 Dunseith St
Pittsburgh, PA 15213
484-942-8625
mbs69@pitt.edu
Pitch Student Membership

Serbin, Zachary

University of Pittsburgh
256 Dunseith St
Pittsburgh, PA 15213
484-942-8634
zgs3@pitt.edu
Pitch Student Membership

Setzler, Tiff

Actual Size
Lead Developer
2746 Baum Boulevard
Pittsburgh, PA 15206
(412)363-2100
tiff@actualsize.com
Ad 2 Member

Shania, James

Point Park University
201 Wood Street BA 138
Pittsburgh, PA 15222
(240)727-1286
smjames@pointpark.edu
Student Membership

Sheffield, Kimberly

Penn State University - Behrend
2919 Gray Avenue
Erie, PA 16510
(814)651-5839
kas6393@psu.edu
Pitch Student Membership

Show, Ned

Chemistry
President
Oliver Building
535 Smithfield Street
Pittsburgh, PA 15222
(412)642-0642
ned@visithelab.com
Gold Corporate Member

Shumbat, Joe

Actual Size
Art Director
2746 Baum Boulevard
Pittsburgh, PA 15206
(412)363-2100
joe@actualsize.com
Silver Corporate Member

Sieber, Richard

St. Clair Hospital
Executive Director Marketing & Development
1000 Bower Hill Road
Pittsburgh, PA 15243
(412)942-4000
richard.sieber@stclair.org
Silver Corporate Member

Sills, Cheryl

MARC USA
SVP/Director of Communications
4 Station Square
Suite 500
Pittsburgh, PA 15219
(412)562-2000
csills@marcusa.com
Gold Corporate Member

Simak, Cindy

Eat'n Park Hospitality Group
Director of Marketing, Parkhurst Dining
285 East Waterfront
Suite 200
Homestead, PA 15120
Silver Corporate Member

Sladack, Dave

Brunner
SVP, Director Channel Marketing
11 Stanwix
5th Floor
Pittsburgh, PA 15222
(412)995-9500
dsladack@brunnerworks.com
Gold Corporate Member

Smith, Lindsey

Smith Brothers Agency
Co-founder/Chief Creative Officer
116 Federal Street
Pittsburgh, PA 15212
(412)359-7200
lindsey.s@smithbrosagency.com
Silver Corporate Member

Smith, Steve

MARC USA
VP/Group Account Director
4 Station Square
Suite 500
Pittsburgh, PA 15219
(412)562-2000
ssmith@marcusa.com
Gold Corporate Member



MEMBERSHIP DIRECTORY

Snyder, Devan

Pittsburgh Human Resources Association
Director Marketing & Member Services
703 Filbert Street
Apartment 1
Pittsburgh, PA 15232
(412)370-3808
dsnyder@pittsburghhra.org
Ad 2 Member

Stallard, Allan

Animal
Color/Finishing
100 First Avenue
Suite 1100
Pittsburgh, PA 15222
(412)566-5656
allan@animaleast.com
Gold Corporate Member

Stefanis-Israel, Barbara

MARC USA
SVP/Director of Marketing
4 Station Square
Suite 500
Pittsburgh, PA 15219
(412)562-2000
bstefanis-israel@marcusa.com
Gold Corporate Member

Stern, Emmiley

Tailored Marketing
Manager Marketing Services
114 43 1/2 Street
Pittsburgh, PA 15201
(724)504-2205
emmiley.stern@gmail.com
Ad 2 Member

Stewart, Jud

Armstrong
VP Marketing
One Armstrong Place
Butler, PA 16001
(724)283-0925
jstewart@agoc.com
Individual Membership

Stewart, Sandy

MOXIE USA
Creative Director
611 William Penn Place
Suite 900
Pittsburgh, PA 15219
(412)471-5300
sandy.stewart@moxieusa.com
Silver Corporate Member

Stoughton, Erin

Eat'n Park Hospitality Group
Director, Guest Engagement
285 East Waterfront
Suite 200
Homestead, PA 15120
Silver Corporate Member

Stresky, Sadie

321Blink
Digital Marketing Manager
25 Brilliant Avenue
Aspinwall, PA 15215
(412)779-7419
sadie.stresky@gmail.com

Swartz, Jeffrey

Ethic Advertising L.L.C.
President
600 Iron City Drive
Suite 200
Pittsburgh, PA 15205
(972)978-9391
swartz@ethic-ads.com
Ad 2 Member

Sweeney, Kristen

Point Park University
7111 Beech Tree Lane
Erie, PA 16510
(814)969-6225
ksweeney@pointpark.edu
Pitch Student Membership

Tedeschi, Brian

Think Communications, Inc.
Owner/President
2100 Wharton Street #507
Pittsburgh, PA 15203
(412)281-9228
brian@thinkcreativity.com
Individual Membership

Thompson, Jerry

MARC USA
EVP/Director of PR
4 Station Square
Suite 500
Pittsburgh, PA 15219
(412)562-2000
jthompson@marcusa.com
Gold Corporate Member

Thompson, Sara

University of Pittsburgh
334 Meyran Ave
Apt 2
Pittsburgh, PA 15213
207-232-2449
smt93@pitt.edu
Pitch Student Membership

Tighe, Gracyn

Harmelin Media
Senior HR Coordinator
525 Righters Ferry Road
Bala Cynwyd, PA 19004
(610)668-7900
gracyn.tighe@gmail.com
Ad 2 Member

Tolley, Geoff

Chemistry
Chief Creative Officer
Oliver Building
535 Smithfield Street
Pittsburgh, PA 15222
(412)642-0642
geoff@visitthelab.com
Gold Corporate Member

Tome, Carolyn

Penn State University - Behrend
4665 Autumnwood Trail
Erie, PA 16506
(814)881-6784
cat5479@psu.edu
Pitch Student Membership

Tragesser, Ray

Upper Cut
Partner/Senior Editor
4 Smithfield Street
10th Floor
Pittsburgh, PA 15222
(412)434-6070
ray@thisissuppercut.com
Individual Membership

Truby, Anastasia

Youngstown State University
111 Duncan Street
Edinburg, PA 16116
(724)730-9192
pokegirl2996@yahoo.com
Pitch Student Membership

Venable, John

Highmark Health
Senior Copywriter
120 Fifth Avenue
FAP 1212
Pittsburgh, PA 15222
(412)225-9059
john.venable@highmarkhealth.org
Individual Membership

Vigna, Mark

Chemistry
VP, Group Account Directory
Oliver Building
535 Smithfield Street
Pittsburgh, PA 15222
(412)642-0642
jason@visitthelab.com
Gold Corporate Member

Villatoro, Manolo

Youngstown State University
111 N. Main Street
Columbiana, OH 44408
(330)402-8721
mano080594@gmail.com
Pitch Student Membership



MEMBERSHIP DIRECTORY

Voltz, Beth

Animal
Editor
100 First Avenue
Suite 1100
Pittsburgh, PA 15222
(412)566-5656
beth@animaleast.com
Gold Corporate Member

Voltz, Nathan

Animal
Post Producer
100 First Avenue
Suite 1100
Pittsburgh, PA 15222
(412)566-5656
nathan@animaleast.com
Gold Corporate Member

Vu, Cathy

Garrison Hughes
Account Executive
100 First Avenue
Suite 200
Pittsburgh, PA 15222
(412)338-0123
cvu@garrisonhughes.com
Ad 2 Member

Waite, Dwayne

Schell Games
Marketing Associate
W 200 Station Square
Pittsburgh, PA 15219
(412)805-8977
dwayne.waite@gmail.com
Ad 2 Member

Walker, Dan

Covalent
5877 Commerce
#218
Pittsburgh, PA 15206
(412)477-7667
dan@wearecovalent.com
Silver Corporate Member

Walzl, Ted

The Verb Agency
Owner/Creative Director
2936 McCully Road
Allison Park, PA 15101
(412)527-2785
ted@theverbagency.com
Individual Membership

Weaver, Abigail

University of Pittsburgh
326 Semple St
Pittsburgh, PA 15213
610-639-4893
alw155@pitt.edu
Pitch Student Membership

Webb, Jessica

Point Park University
519 Northview Drive
Glenshaw, PA 15118
(412)592-8830
jlwebb@pointpark.edu
Pitch Student Membership

Wertz, Michael

Apple Box Studios
Chief Creative Officer
1243 Penn Avenue
2nd Floor
Pittsburgh, PA 15222
(412)642-3971
michael.wertz@appleboxstudios.com
Silver Corporate Member

White, Megan

West Virginia University
1210 Augusta Drive
Aliquippa, PA 15001
(724)683-0621
mmw0024@mix.wvu.edu
Student Membership

Williams, Nathaniel

Covalent
Producer
5877 Commerce
#218
Pittsburgh, PA 15206
(412)477-7667
nathaniel@wearecovalent.com
Silver Corporate Member

Yakshe, Matthew

Robert Morris University
23 Buena Vista
Delmont, PA 15626
(724)216-3806
myakshe23@gmail.com
Student Membership

Yeaman, Eric

Actual Size
Senior Graphic Designer
2746 Baum Boulevard
Pittsburgh, PA 15206
(412)363-2100
eric@actualsize.com
Ad 2 Member

Young, Brook

MOXIE USA
SVP, Client Partner
611 William Penn Place
Suite 900
Pittsburgh, PA 15219
(412)471-5300
brooke.young@moxieusa.com
Silver Corporate Member

Yourd, Danny

Animal
Director/Creative Producer
100 First Avenue
Suite 1100
Pittsburgh, PA 15222
(412)566-5656
danny@animaleast.com
Gold Corporate Member

Zhang, Yixiao

University of Pittsburgh
3333 Forbes Ave
Skyvue Apts 451
Pittsburgh, PA 15213
412-765-9541
yiz103@pitt.edu
Pitch Student Membership

Zona, Neena

TEKsystems Digital
Digital & Creative Recruiter
1475 Hemlock Drive
Irwin, PA 15642
(724)961-0687
nzona@teksystems.com
Ad 2 Member

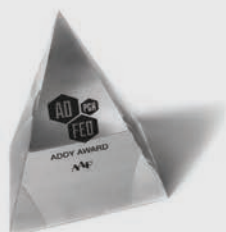
A photograph of the Pittsburgh skyline at night, with various skyscrapers illuminated in blue, green, and yellow. The city lights are reflected in the water of the river in the foreground. A bridge is visible on the right side of the image.

Congratulations

to the 2018 ADDY Award Winners.

rrd COMMERCIAL
& DIGITAL PRINT
SOLUTIONS

218 North Braddock Avenue • Pittsburgh, PA 15208 • 412.241.8200 • www.rrd.com



CONGRATULATIONS FROM CHEMISTRY

Think big.

Your big idea isn't so much of a novelty anymore.

A couple dozen people tried to put their fingerprints on it.

Even the guy at the gas station said the logo should be bigger.

Nobody ever stares at the logo.

In fact, some people who saw your

idea don't even realize you went the extra 32 miles for it.

Or spent five days perfecting the copy instead of five minutes.

Or never settled for stock photography. Or racked up close to 40,000 print outs on it.

That's because once you get used to

doing great work, you don't even think about that stuff anymore.

Except when you squeeze into an auditorium filled with hundreds of your friends and colleagues, collect your Addy, and realize you've created something worth remembering. Think about it.

